

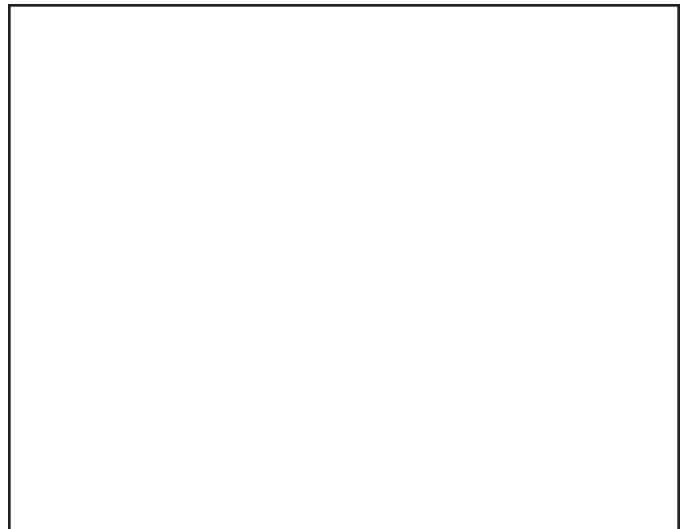
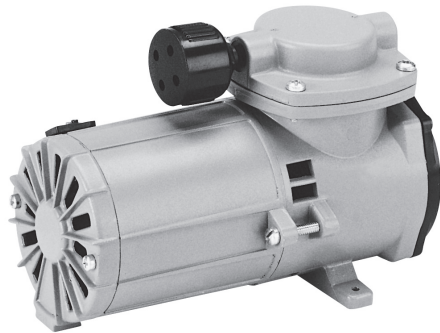


Diaphragm 107 Series



A Thomas Industries Company

Flow	1.40 CFM	39.6 LPM
Max. Pressure	35.0 PSI	2.4 Bar
Max. Vacuum	22.9"hg	-775 mbar



Pneumatic Data

Model	107 Series	107 Series
Model Number	107CDC20	107CDC/C20
Max. Flow (CFM/LPM)	1.40/39.6	1.40/39.6
Max. Intermittent Pressure (PSI/bar)	35.0/2.4	20.0/1.4
Max. Continuous Pressure (PSI/bar)	35.0/2.4	20.0/1.4
Max. Vacuum (IN.hg/mbar)	22.9"/-775	22.9"/-775

Electrical Data

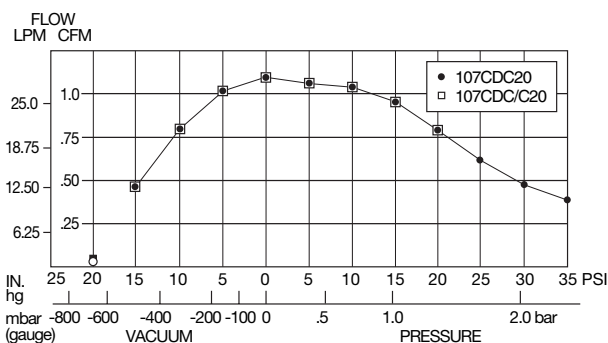
Motor Type	Perm. Magnet	Perm. Magnet
Motor Voltage	12.0v DC	12.0v DC
Nominal Speed	2970	2970
Power (watts)	—	—
Amperage (amps)	8.5	8.5
Thermal Protector	No	No
Insulation Class	A	A

General Data

Ambient Temperature °F/°C (Max.-Min.)	104°F-50°F/ 40°C-10°C	104°F-50°F/ 40°C-10°C
Weight (lbs./Kg)	4.5lbs./2.0Kg	4.7lbs./2.1Kg

Flow Curves

107CDC20... Standard Model



The information presented in this material is based on technical data and test results of nominal units. It is believed to be accurate and reliable and is offered as an aid to help in the selection of Thomas products. It is the responsibility of the user to determine the suitability of the product for his intended use and the user assumes all risk and liability whatsoever in connection therewith. Thomas Industries does not warrant, guarantee or assume any obligation or liability in connection with this information.

Note: Models pictured are representative of the series and do not represent a specific model number. Consult factory for detailed physical description.

Rietschle Thomas Sheboygan, Inc.
 1419 Illinois Avenue, P.O. Box 29
 Sheboygan, WI 53082-0029 USA
 Phone: (920) 457-4891
 Fax: (920) 451-4276
www.rtpumps.com